



# International Etchells British Open and National Championship

Friday 24, Saturday 25 & Sunday 26 June 2016

The Organising Authority is Royal London Yacht Club in conjunction with the UK International Etchells Class (Cowes Fleet)

## Amended Sailing Instructions

### 1. RULES

- 1.1 The event will be governed by the Racing Rules of Sailing (RRS) and the Etchells Class Rules. The championship is a Class B Sanctioned Event in accordance with Etchells Class Rules Appendix A. Sail nomination and weigh-in are required.
- 1.2 The regatta is a World Qualifying Event for the Cowes World Championship in September.
- 1.3 The organising authority will provide bow sticker numbers which shall be displayed 52cm back from the bow and 6cm from the shearline. Single digit numbers (e.g."2") must display the leading zero (e.g."02").
- 1.4 If there is a conflict between any rule or regulation, other than the RRS, the sailing instructions will prevail. This changes RRS 63.7.

### 2. NOTICES TO COMPETITORS

- 2.1 Notices to competitors will be posted on the official notice board at the Cowes Yacht Haven and may be repeated on the notice board at the Royal London Yacht Club.

### 3. CHANGES TO SAILING INSTRUCTIONS

- 3.1 Any change to the sailing instructions made ashore will be posted by 09:00 on the day it will take effect, except that any change to the schedule of races will be posted by 20:00 on the day before it will take effect.

### 4. SIGNALS MADE ASHORE

- 4.1 Signals made ashore will be displayed at the Cowes Yacht Haven flagstaff.
- 4.2 When flag AP is displayed ashore, '1 minute' is replaced by not less than 45 minutes.' This changes Race Signals AP.

## 5. SCHEDULE OF EVENTS

Date	Time	Event	Location
<b>Thursday 23 June</b>	1900 - 2100	Sail nomination & crew weigh-in	Cowes Yacht Haven
<b>Friday 24 June</b>	0700 - 0900	Late sail nomination & crew weigh-in	Cowes Yacht Haven
	0900	Competitors briefing	Cowes Yacht Haven
	1055	First warning signal	
<b>Saturday 25 June</b>	1025	First warning signal	Buffet supper at RLYC smart casual
<b>Sunday 26 June</b>	1025	First warning signal	
	ASAP after racing	Prize giving	Cowes Yacht Haven

5.1 Three races are scheduled each day but may be altered in the event of an adverse weather forecast. Subsequent races will start as soon as practical after the last boat finishes. No warning signal will be made after 1700 on Saturday or 1500 on Sunday unless there is a postponement or general recall during a starting sequence.

## 6. CLASS FLAGS

6.1 The class flag will be IC Flag E.

## 7. RACING AREA

7.1 Racing to be in the Central Solent from a committee boat. The starting area/committee boat location will be announced on VHF Channel 77 from approximately one hour before the first warning signal.

## 8. THE COURSES

8.1 The diagrams on the back page of these sailing instructions show the courses, including the order in which marks are to be passed and the side on which each mark is to be left.

8.2 No later than the warning signal, the race committee boat will display, in a frame on the stern of the committee boat, the approximate compass bearing of the first leg and the course to be sailed. Alternatively the course may be announced using the single letter identifier or a series of two digit identifiers from the list of marks in 8.3 on VHF Channel 77 before the warning signal and maybe repeated after the warning signal. This changes RRS 27.1.

8.3 See table below

<b>Laid Mark Two Digit Identifiers</b>	
<b>8A</b> Windward Laid Mark	<b>8B</b> Windward Spreader Mark
<b>8C</b> Leeward Laid Mark	<b>8D</b> Leeward Spreader Mark
<b>8E</b> Leeward Gate	<b>8F</b> Middle Gate
<b>8G</b> Wing Mark	<b>8H</b> Outer Distance Mark

## 9. MARKS

- 9.1 Marks will be orange cylinders. Change marks will be black pyramids. If necessary fixed navigation buoys or racing marks listed in the sailing instructions may be used to provide windward/ leeward courses.

## 10. THE START

- 10.1 **Starting Alert:** To alert boats that a race will soon begin from the committee boat, an orange flag will be displayed with one sound for five minutes before the warning signal.
- 10.2 **Starting Line:** The starting line is between a staff displaying an orange flag on the committee boat at the starboard end and the course side of the ODM which is an inflated mark or a staff displaying an orange flag on a committee boat.

## 11. RECALLS AND STARTING PENALTIES

- 11.1 Sail numbers of individually recalled boats may be broadcast on VHF Channel 77 as soon as practical. Failure to broadcast sail numbers, or for a boat to hear such broadcast, shall not be grounds for redress. This changes RRS 62.1(a).
- 11.2 A boat starting later than five minutes after her starting signal will be scored Did Not Start without a hearing. This changes RRS Appendix A.
- 11.3 **Starting Penalty:** If flag U has been displayed as the preparatory signal, no part of a boat's hull, crew or equipment shall be in the triangle formed by the ends of the starting line and the first mark during the last minute before her starting signal. If a boat breaks this rule and is identified, she shall be disqualified without a hearing but not if the race is restarted or resailed or postponed or abandoned before the starting signal. This changes RRS 26 and RRS 63.1. When flag U is used as the preparatory signal, RRS 29.1 does not apply. The scoring abbreviation for a flag U penalty is UFD. This adds to A11.

## 12. CHANGE OF THE NEXT LEG OF THE COURSE

- 12.1 To change the next leg of the course, the race committee will lay a new mark (or move the finishing line) and remove the original mark as soon as practical. When in a subsequent change a new mark is replaced, it will be replaced by an original mark. A boat shall not request redress under RRS 60.1(b) because of action or no action by race committee under this instruction.

## 13. THE FINISH

- 13.1 The finishing line is between the staff or halyard displaying an orange flag on a committee boat and the course side of the ODM of the start/finish Line or the last mark of the course.

## 14. PENALTY SYSTEM

- 14.1 The first two sentences of RRS 44.1 are changed to: 'A boat may take a One Turn Penalty when she may have broken a rule of Part 2 or RRS 31 while racing. However, when she may have broken a rule of Part 2 while in the zone around a mark other than a starting mark, her penalty shall be a Two Turns Penalty.'

## **15. TIME LIMIT**

- 15.1 The time limit will be 90 minutes.
- 15.2 Boats failing to finish within 20 minutes after the first boat sails the course and finishes may be awarded a finishing position or Did Not Finish without a hearing. This changes RRS 35 and Appendix A5.

## **16. PROTESTS, REQUESTS, REQUESTS FOR REDRESS AND ARBITRATION**

- 16.1 Protest forms are available at the regatta office at the Cowes Yacht Haven. Protests and requests for redress or reopening shall be delivered to the regatta office within the protest time limit. Contact mobile phone numbers should be included on the protest form.
- 16.2 The protest time limit is 105 minutes after the last boat has finished the last race of the day.
- 16.3 Notices will be posted on the official notice board at the Cowes Yacht Haven no later than 30 minutes after the protest time limit to inform competitors of hearings in which they are parties or named as witnesses. Hearings will be held in the protest room, located at Cowes Yacht Haven, beginning at the time posted.
- 16.4 Notices of protests by the race committee or protest committee will be posted to inform boats under RRS 61.1(b).
- 16.5 Breaches of sailing instructions 18, 21, 23, 24, 25, 26, 27 and RRS 55 will not be grounds for a protest by a boat. This changes RRS 60.1(a). Penalties for these breaches may be less than disqualification if the protest committee so decides. The scoring abbreviation for a discretionary penalty imposed under this instruction will be DPI. This adds to A11.
- 16.6 On the last scheduled day of racing a request for reopening a hearing shall be delivered:
  - (a) within the protest time limit if the requesting party was informed of the decision on the previous day;
  - (b) no later than 30 minutes after the requesting party was informed of the decision on that day. This changes RRS 66.
- 16.7 On the last scheduled day of racing a request for redress based on a protest committee decision shall be delivered no later than 30 minutes after the decision was posted. This changes RRS 62.2.
- 16.8 RYA Arbitration will be available. The procedure is described on the RYA website ([www.rya.org.uk](http://www.rya.org.uk)) under Rules Disputes. The exoneration penalty will be a 20% scoring penalty in accordance with RRS 44.3 (c). Arbitration requests shall be delivered within the protest time limit. Contact mobile numbers should be included on the form.

## **17. SCORING**

- 17.1 Nine races are scheduled and six races are required to constitute a series. Changing RRS Appendix A2, one discard will be applied after six races have been completed.

## **18. SAFETY REGULATIONS**

- 18.1 All boats shall sail on starboard tack close to the stern of the committee boat and hail their sail number prior to the start of the first race each day. At the same time, a boat shall notify the race committee if any of their sails carry different sail numbers to their main sail.
- 18.2 A boat that retires from a race shall notify the race committee as soon as possible on VHF Channel 77, or by hailing an official regatta support boat/rib.

## **19. REPLACEMENT OF CREW OR EQUIPMENT**

- 19.1 Substitution of competitors will not be allowed without written approval of the race committee.
- 19.2 Substitution of damaged or lost equipment will not be allowed unless authorised by the race committee. Requests for equipment substitution shall be made in writing to the race committee.

## **20. EQUIPMENT AND MEASUREMENT CHECKS**

- 20.1 A boat or equipment may be inspected at any time for compliance with the class rules and sailing instructions. On the water, a boat may be instructed by a race committee equipment inspector or measurer to proceed immediately to a designated area for inspection.

## **21. OFFICAL BOATS**

- 21.1 Committee vessels and RIBs will fly the Royal London YC club burgee.

## **22. SUPPORT BOATS**

- 22.1 Team leaders, coaches and other support personnel shall stay outside areas where boats are racing from the time of the preparatory signal for each start until all boats have finished a race or retired or the race committee signals a postponement, general recall or abandonment.

## **23. HAUL OUT RESTRICTIONS**

- 23.1 Boats shall be afloat before 1730 on Thursday 23<sup>rd</sup> June 2016
- 23.2 Boats shall not be hauled out during the event except with and in accordance to the terms of the prior written permission of the race committee.

## **24. PLASTIC POOLS**

- 24.1 Plastic pools or their equivalent shall not be used around competing yachts between the close of registration on Friday and the end of the regatta.

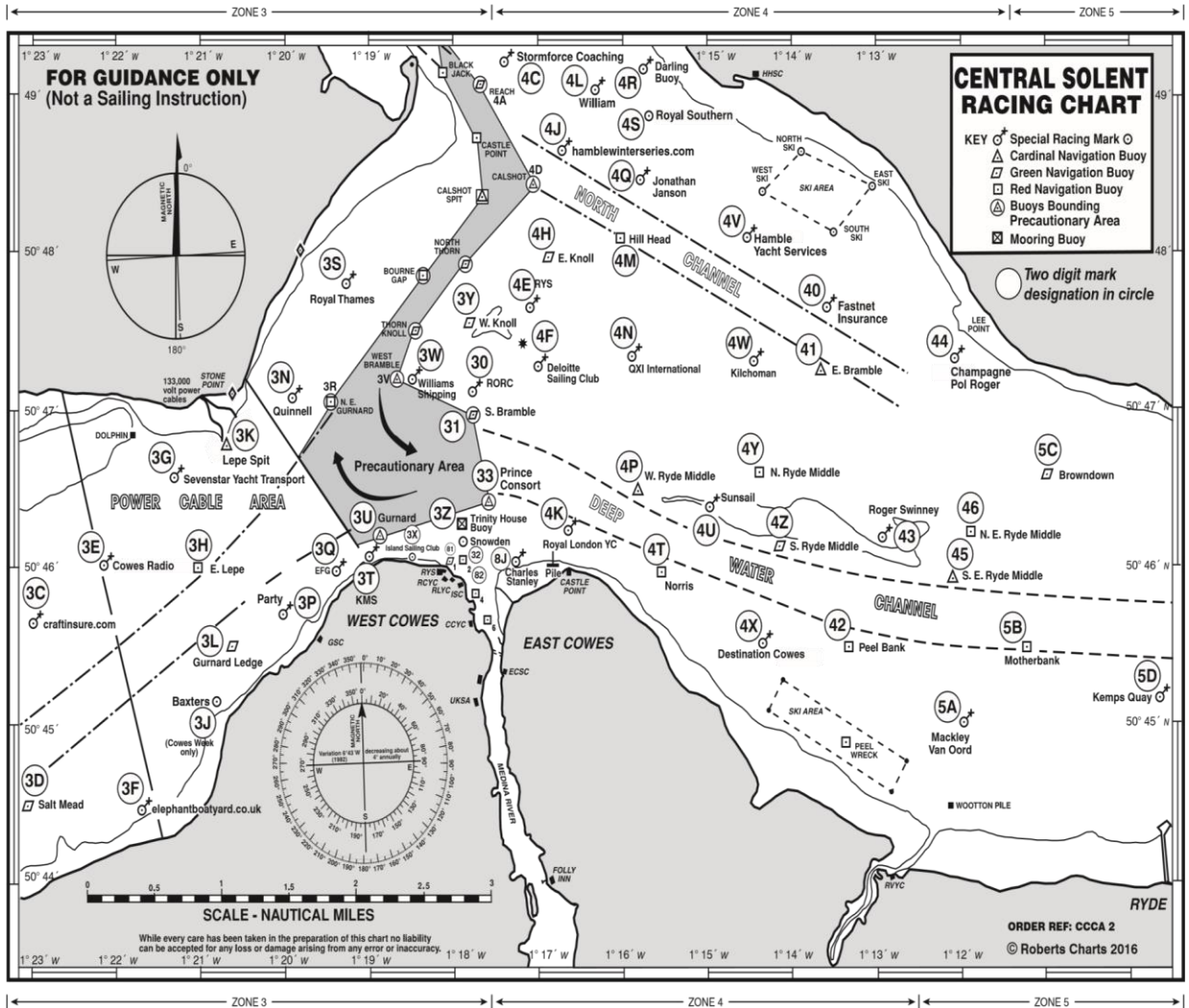
## **25. RADIO COMMUNICATION**

- 25.1 Except in an emergency, a boat shall neither make radio transmissions while racing nor receive radio communications not available to all boats. This restriction also applies to mobile telephones. The race committee may broadcast information to competitors on VHF channel 77

both before and during a race. Failure to receive or transmit shall not be grounds for redress. This changes RRS 62.1(a).

**26. DISCLAIMER OF LIABILITY**

- 26.1 Competitors participate in the regatta entirely at their own risk. See RRS 4, Decision to Race. The organising authority will not accept any liability for material damage or personal injury or death sustained in conjunction with or prior to, during, or after the regatta.





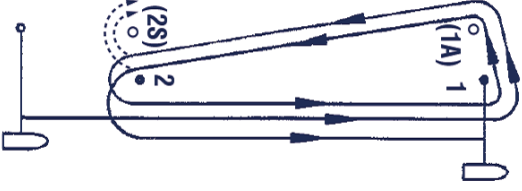
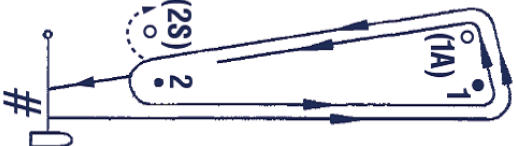
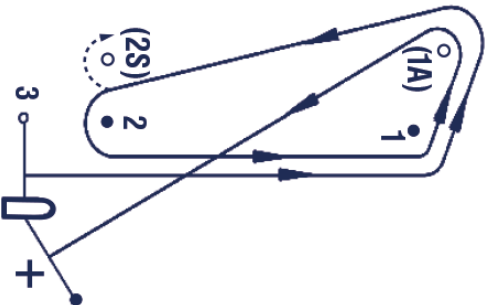
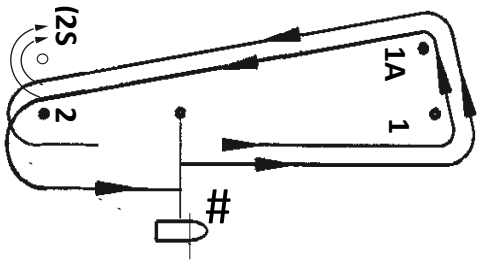
### Central Solent Course Mark Two Digit Identifiers

3C	craftinsure.com	30	RORC	4V	Hamble Yacht Services
3D	Salt Mead	31	South Bramble	4W	Kitchoman
3E	Cowes Radio	32	Snowden	4X	Destination Cowes
3F	elephantboatyard.co.uk	33	Prince Consort	4Y	North Ryde Middle
3G	Sevenstar Yacht Transport	3C	Stormforce Coaching	4Z	South Ryde Middle
3H	East Lepe	3E	RYS	40	Fastnet Insurance
3J	Baxters	3F	Deloitte Sailing Club	41	East Bramble
3K	Lepe Spit	3H	East Knoll	42	Peel Bank
3L	Gurnard Ledge	3J	hamblewinterseries.com	43	Roger Swinney
3N	Quinnell	3K	Royal London YC	44	Champagne Pol Roger
3P	Party	3L	William	45	S E Ryde Middle
3Q	EFG	3M	Hillhead	46	N E Ryde Middle
3S	Royal Thames	3N	QXI International	5A	Mackley Van Oord
3T	KMS	3P	West Ryde Middle	5B	Motherbank
3U	Gurnard	3Q	Jonathan Janson	5C	Browndown
3W	Williams Shipping	3R	Darling Buoy	5D	Kemps Quay
3X	Island Sailing Club	3S	Royal Southern	81	No 1 Cowes Harbour Buoy
3Y	West Knoll	3T	Norris	82	No 2 Cowes Harbour Buoy
3Z	Trinity House Buoy	3U	Sunsail	8J	Charles Stanley

# The course to be sailed is shown below each course diagram.

Diagrams are not to scale

- Leave all marks to port unless indicated (S) to starboard.
  - # is Start / Finish Line, + is Finish Line.
  - Marks shown in brackets ( ) will not be laid unless the designated symbol is displayed as follows:
-  displayed means a Spreader or Offset Mark (1A) is laid
  displayed means the Leeward Mark is a gate

COURSE A	COURSE B	COURSE C	COURSE D
			
Start-1-(1A)-2(2S)-1-(1A)-2(2S)-1 (shown above)	B1 Start-1-(1A) - # B2 Start-1-(1A)-2(2S)-1-(1A) - # (shown above)	C1 Start-1-(1A) - + C2 Start-1-(1A)-2(2S)-1-(1A) - + (shown above)	D1 Start-1-(1A)-2(2S) - # D2 Start-1-(1A)-2(2S)-1-(1A)-2 - # (shown above)